

Why Swine in Ophthalmology Research?

A clinically relevant ophthalmology model

Swine are among the most clinically relevant large-animal models in ophthalmology, closely replicating human ocular anatomy and physiology. They provide high translational value for corneal and retinal diseases, gene and cell therapies, surgical validation, and advanced drug delivery strategies.

Anatomical & Physiological Relevance

- Ocular size comparable to humans
- Similar retinal and corneal structure and vascularization
- Cone-rich visual streak (macula-relevant region)

Surgical & Translational Advantages

- Suitable for surgical manipulation and device testing
- Ideal for advanced imaging and longitudinal follow-up

02 // In-House Advanced Ophthalmic Equipment

Our fully equipped ophthalmic surgical and imaging suite enables comprehensive evaluation from functional to structural endpoints.

Imaging & Diagnostics

- Multicolour OCT
- Retinography
- ERG (Electroretinography)
- Tonometer (IOP measurement)
- Indirect ophthalmoscope

Surgical & Procedural Platforms

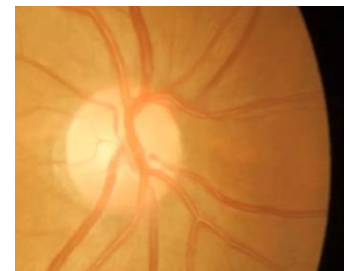
- Surgical microscope
- Stereomicroscope
- Vitrectomy system
- Laser Purepoint

Our track record in ophthalmology research:

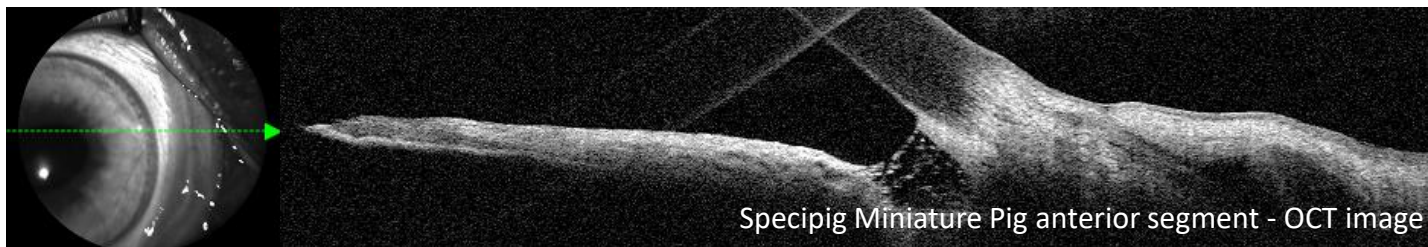
- 15+ successful ophthalmology studies
- 3 ophthalmic disease-specific models tailored to the study needs
- Advanced ocular administration routes: subretinal, intravitreal, suprachoroidal, etc.

01 // World-Class Ophthalmic Expert Support

Our ophthalmology platform is strengthened by internationally recognized veterinary ophthalmology specialists providing clinical insight, advanced surgical expertise, and scientific guidance across preclinical development programs.



Specipig Miniature Pig Retina



Specipig Miniature Pig anterior segment - OCT image



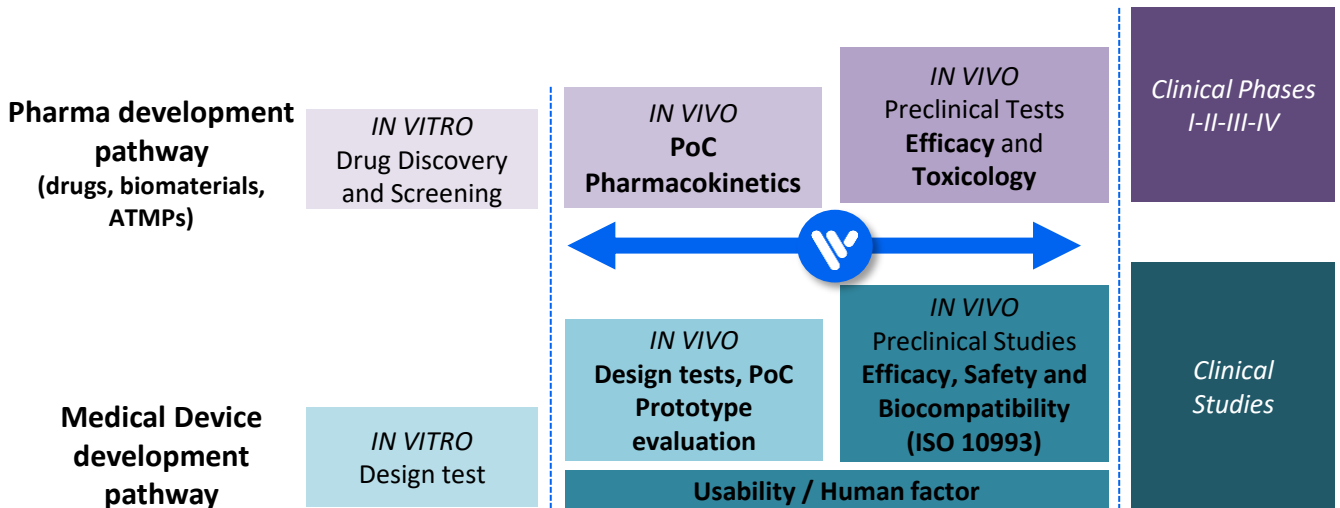
Why VERSA?



VERSA BIOMEDICAL is a pioneering Biomedical Research Centre (CRO) specialized in the **pig and human cadavers** as a **preclinical model**.

- 01 Tailored study design & consultancy
- 02 Therapeutic & device testing expertise
- 03 State-of-the-art research facilities
- 04 Expert network collaboration
- 05 In-house breeding of our proprietary miniature pig model, Specipig®

How can Versa Biomedical support your pipeline development?



Our sponsors' words

"Great experience at Versa Biomedical!! The study was completed on schedule and benefited greatly from the excellent work of Versa's team and expert dental surgeon."

Robert Quintana

Polymer Lead Research Scientist,
Luxembourg Institute of Science and Technology

Regulatory & Quality Compliance



European Animal Research Association

Your product. Your endpoints. Our expertise.

Contact our Commercial Team:

Assela Bosch
Head of Commercial and BD
asselabosch@versabiomedical.com
[+34 671 020 270](tel:+34671020270)

VERSA Biomedical
www.versabiomedical.com
El Prat de Llobregat (Barcelona)
[+34 93 010 78 85](tel:+34930107885)